

OpenSense

Datasheet





OpenSense

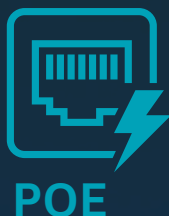
A smart device built to monitor; environmental parameters, energy usage, waste, costs and productivity.



Parameters



Comms



Connectivity



CAN bus

1-wire



RS232

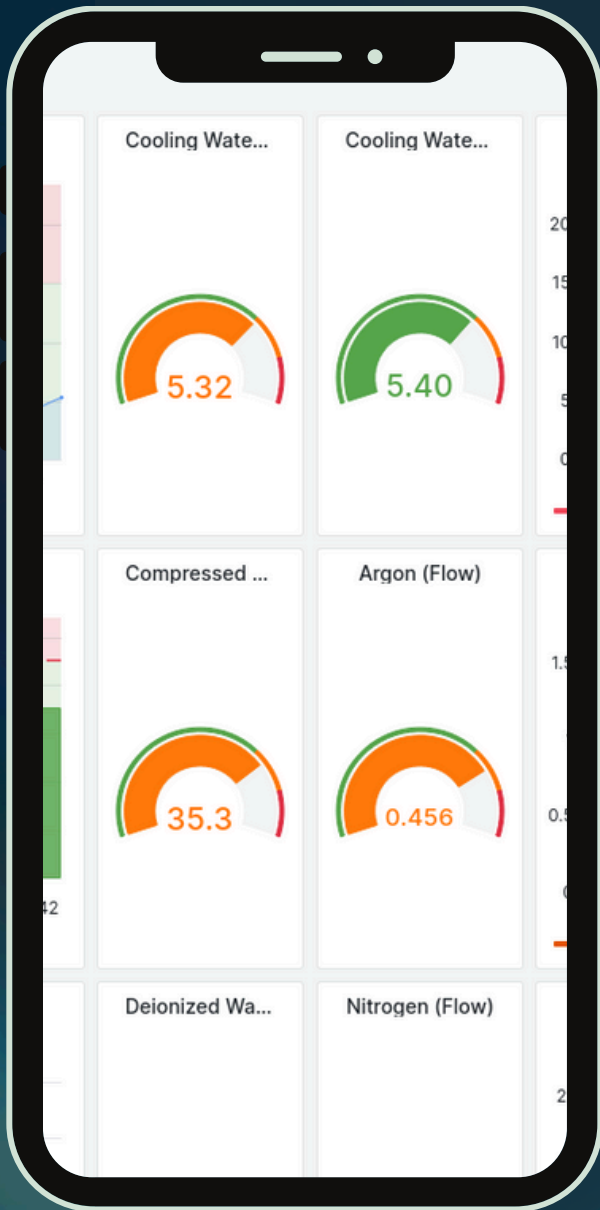


RS485



Modbus

Benefits



**Remote
Monitoring**



**Data, Net Zero,
& Sustainability**



**Resource & Cost
Efficiency**



**Wellbeing &
Compliance**



**Productivity &
Quality Control**



**Machine &
Process Control**



**Overall
Equipment
Effectiveness**

Technical Specification

Built-in measurements:

- Air Quality
- Temperature
- Relative Humidity
- Sound Level Meter
- Light Level Meter

Air Quality

(PM1.0, PM2.5, PM4, PM10, VOC Index, *NOX Index)

Range: 0 - 1000ug/m³

Resolution: 1.25ug/m³

Accuracy: (0 µg/m³ to 100 µg/m³ range ±10 µg/m³), (100µg/m³ to 1000 µg/m³ range ±25 %)

Temperature:

Range: -10 to +50 °C

Accuracy: ±0.45 °C

Humidity:

Range: 0 - 90%RH

Accuracy: ±4.5%RH

Sound Level Meter:

Range: 35.1 - 122.5dB

Resolution: 0.1dB

Accuracy: ±2dB

Light Level Meter:

Range: 0 - 3500 Lux

Resolution: 1 Lux

Accuracy: ±5.0% (RDG)

External measurements/inputs:

- 15A/30A/50A/100A/200A/300A/400A

Current Clamp (1ph/3ph)

- Pulse Input x 2 (3.3V to 24V DC Levels)

- RS485 Modbus (e.g. Utility Meters, BMS, Sensors)

- CAN Bus (e.g. Control modules, Sensors)

- 1-Wire DS18B20 Temperature Probe

Current Clamps:

Channels: 1-3

Range: 0 - 400A

Resolution: 0.081A

Accuracy: ±1.0% (RDG)

(Suitable for cable size up to 13mm diameter - 14-100A

Up to 24mm - 200-400A)

Digital Inputs (Pulse/1-Wire Functions):

Channels: 2

Range: 0 - 100kHz

Modbus RTU RS485:

Supports 8 devices & 16 registers/device

Data rate: 1Mbps

ESD Protection:

±15 kV IEC 61000-4-2 air discharge

±8 kV IEC 61000-4-2 contact discharge

CAN Bus:

Data rate: 1Mbps

Compliant with ISO 11898-2

ESD Protection Exceeds ±16 kV HBM

Licenses: Hardware: CERN OHL-W v2

Software: LGPLv3

***Special Order**



Power: USB Type C 5V 1A adaptor (supplied),

Weight: 350g

Dimensions: 110mm x 90mm x 48mm

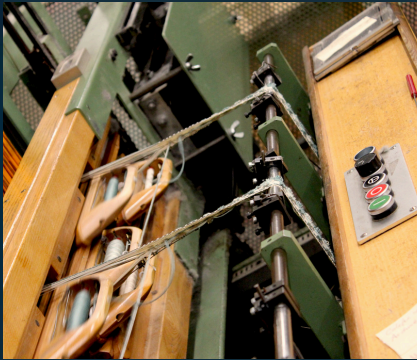
Comms: WiFi or LoRaWAN

Certifications



Use Cases

Case
Studies



**Machine
Monitoring**



**Predictive
Maintenance**



**Energy
Monitoring**



**Productivity
Insights**



Green Energy



**Remote
Monitoring**



**Clean Room
Monitoring**



**Smart
Farming**



Smart Cities

Ordering & Contact

OSM-OSx-CT3-COM

OpenSense = OSM-OS-CT3-COM

OpenSense Air = OSM-OSA-CT3-COM

OpenSense Flame = OSM-OSF-CT3-COM

COM = WIFI / LORA / POE



sales@devtank.co.uk
01332650944

